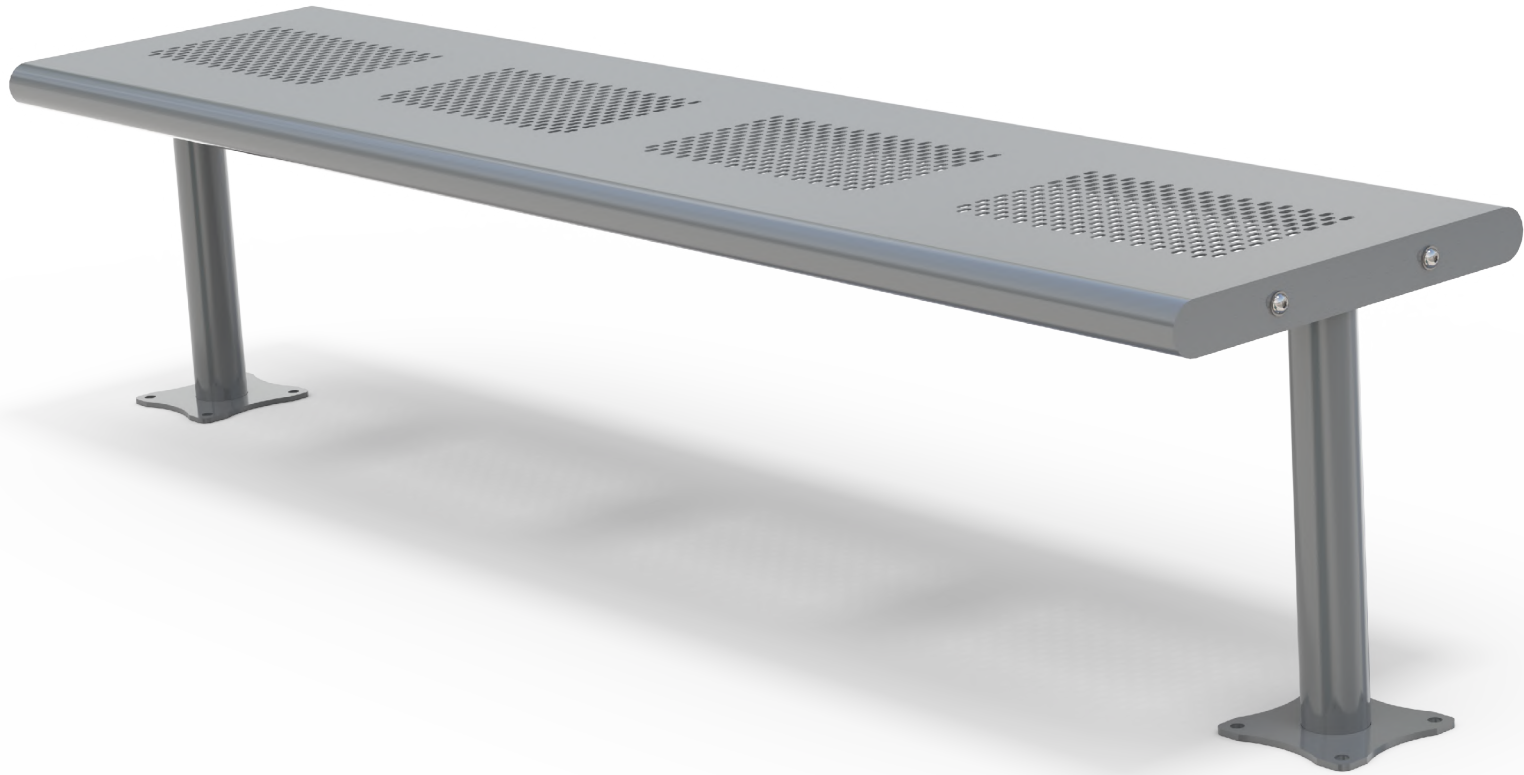
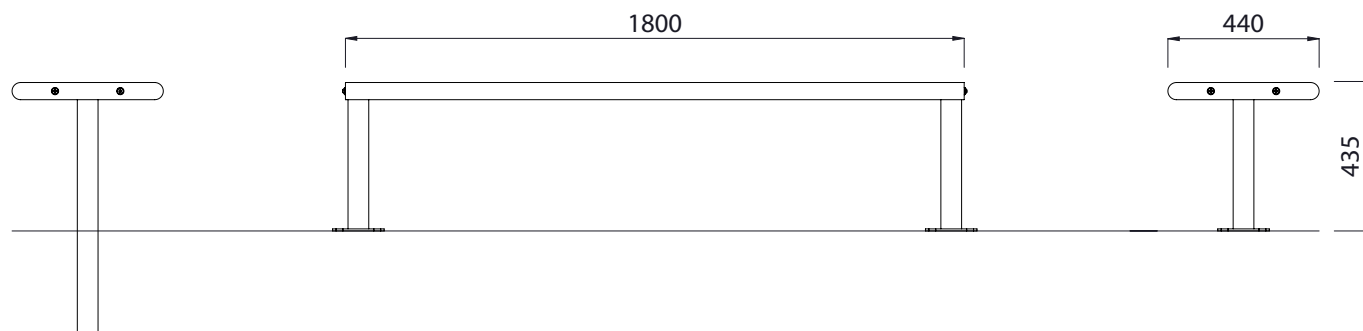
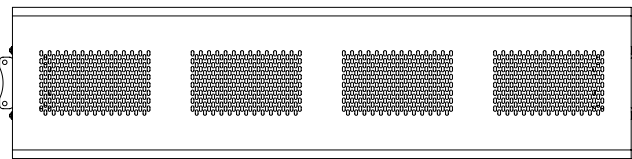


Cleanline Bench



Colours / finishes shown are indicative only and may differ in reality.



	MATERIALS	FINISHES	FINISH OPTIONS
Steelwork	<ul style="list-style-type: none"> Stainless steel perforated seat pan Mild steel hot dip galvanised frame 	<ul style="list-style-type: none"> Powdercoated as standard 	<ul style="list-style-type: none"> Custom paint options
Hardware / Fasteners	<ul style="list-style-type: none"> Stainless steel 		
	OPTIONS	DIMENSIONS	WEIGHT
<ul style="list-style-type: none"> Plant or surface mounted Custom punch pattern / design into seat pan Skate deterrents 		<ul style="list-style-type: none"> 1800L x 435H x 440D as standard 	<ul style="list-style-type: none"> 35Kg

- Part of the 'Cleanline' furniture suite. Made to order and can be customised to suit clients requirements.
- Furniture is not supplied with installation instructions, install fastenings or footing details. These are to be specified and determined by the installing contractor for the specific requirements of each site.