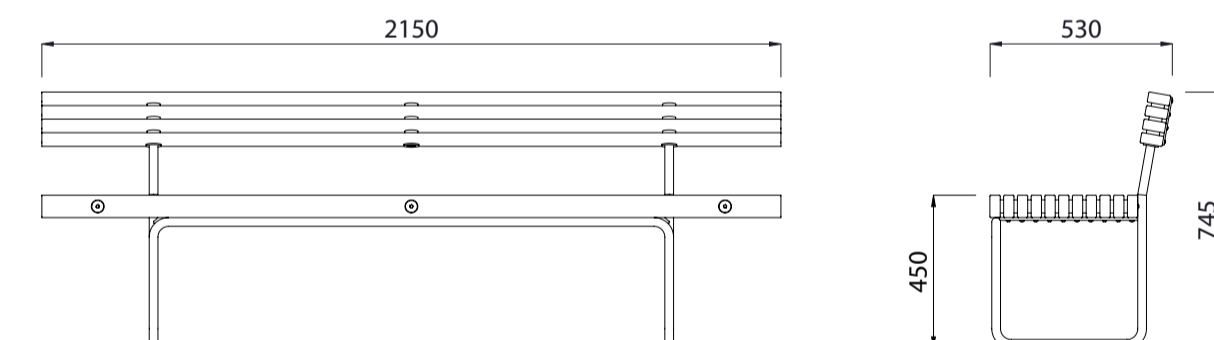
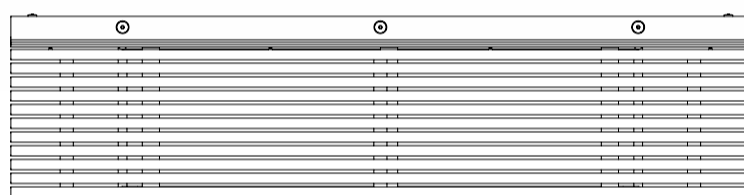


# ARTNL Railway Load Seat



Colours / finishes shown are indicative only and may differ in reality. Bench shown with optional armrests.



## MATERIALS

- Timber (Hardwood)**
  - Vitex as standard
  - Other species available on request
- Steelwork**
  - 304 stainless steel as standard
- Hardware / Fasteners**
  - Stainless steel

## FINISHES

- Un-sealed (Natural) as standard
- Electropolished as standard

## FINISH OPTIONS

- Penetrating oil / Graffiti guard / Clear sealant

## OPTIONS

- Plant or surface mounted
- [Skate deterrents](#)

## DIMENSIONS

- 2150L x 745H x 530D as standard

## WEIGHT

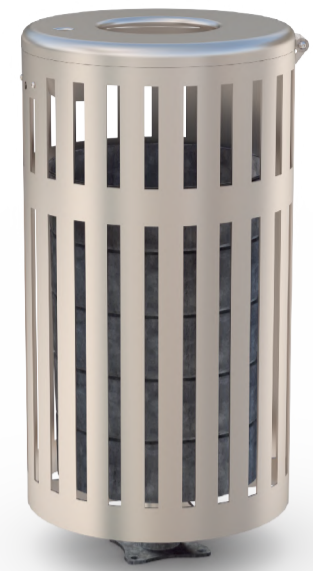
- 68Kg

- Part of the 'ARTNL' furniture suite. Made to order and can be customised to suit clients requirements.  
**Auckland Council / Auckland Transport specified design**, manufactured by Fel Group.
- Furniture is not supplied with installation instructions, install fastenings or footing details. These are to be specified and determined by the installing contractor for the specific requirements of each site.

# ARTNL Suite Complementing Furniture



ARTNL Seat Surface Mounted 2850L



ARTNL Bin



ARTNL Seat Rail Mounted 2850L



ARTNL Bin Post Mounted



ARTNL Load Seat 2150L