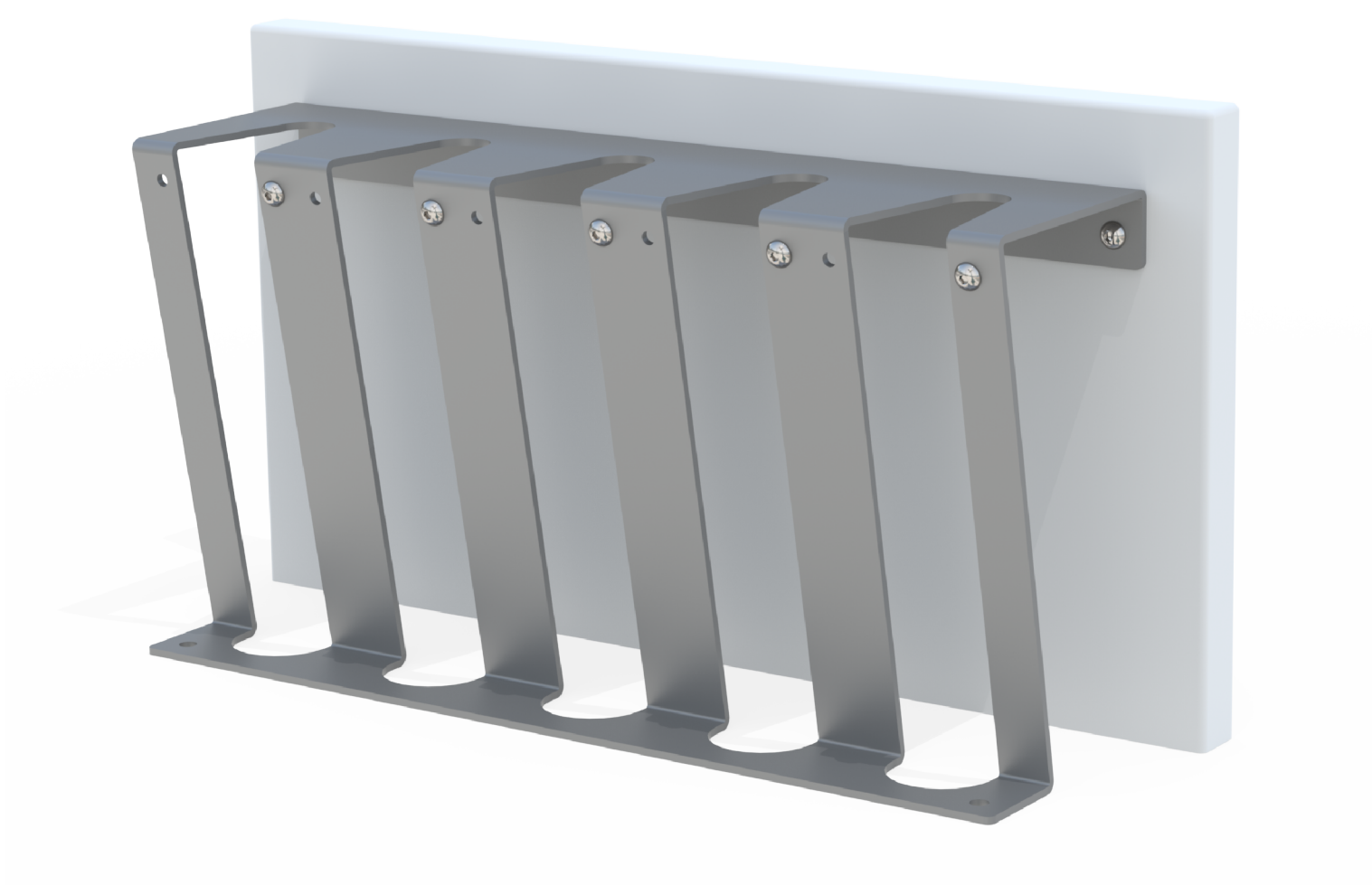
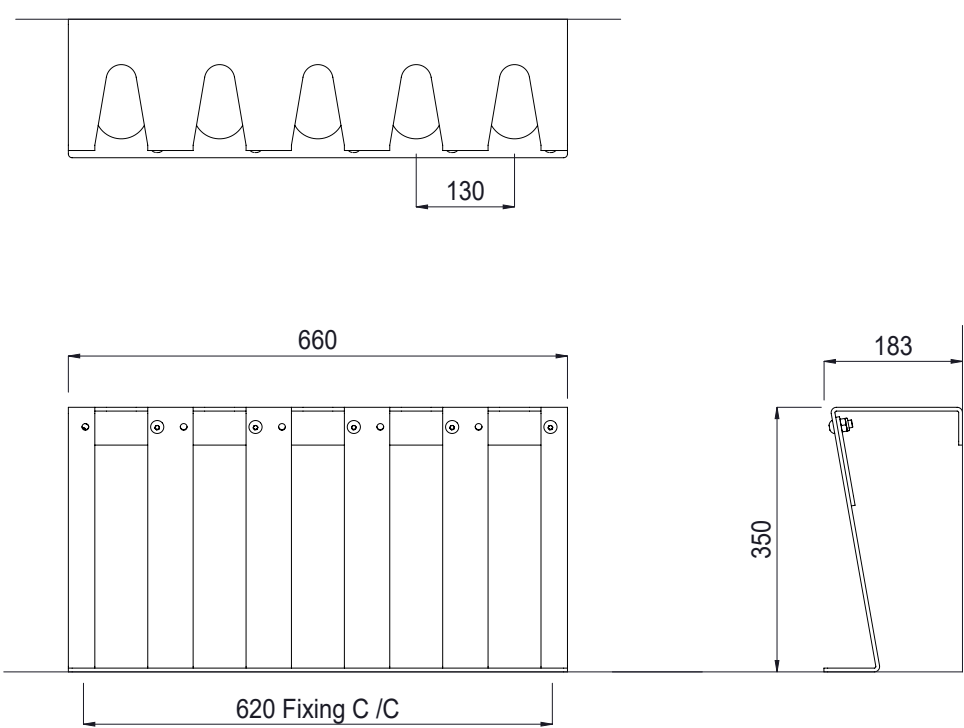


EZ Push Scooter Rack

5 Berth



Colours / finishes shown are indicative only and may differ in reality.



	MATERIALS	FINISHES	FINISH OPTIONS
Metalwork	<ul style="list-style-type: none">Mild SteelAluminium304 Stainless steel	<ul style="list-style-type: none">Hot dip galvanised only or Hot dip galvanised and PowdercoatedPowdercoated as standardElectropolished as standard	<ul style="list-style-type: none">Custom paint options
Hardware / Fasteners	<ul style="list-style-type: none">Stainless steel		
	OPTIONS	DIMENSIONS	WEIGHT
	<ul style="list-style-type: none">Base of wall mountedHinged locking tabs as standardPadlocks <u>not</u> supplied as standard	<ul style="list-style-type: none">660L x 350H x 183D	<ul style="list-style-type: none">4Kg (Aluminium)10Kg (Steel)

- Made to order and can be customised to suit clients requirements.
- Furniture is not supplied with installation instructions, install fastenings or footing details. These are to be specified and determined by the installing contractor for the specific requirements of each site.