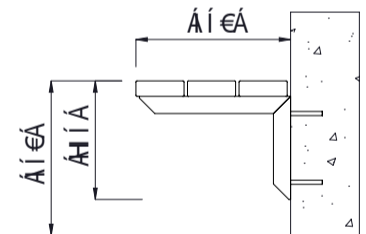
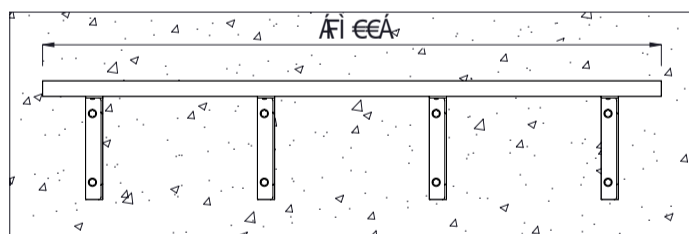
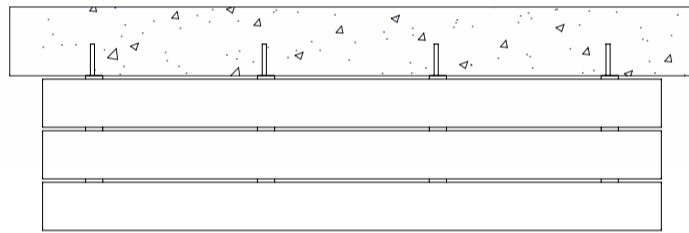




0 [ | ^ | • Á a @ • Á @ , } Á ^ Á a á æ Á } | Á a Á æ Á a ! Á Á a á È



**MATERIALS**

- Timber (Hardwood)**
  - Vitex as standard
  - Other species available on request
- Timber (Softwood)**
  - Pine
- Steelwork**
  - Mild steel
- Hardware / Fasteners**
  - Stainless steel

**FINISHES**

- Un-sealed (Natural) as standard
- H3.2 tanalised as standard
- Hot dip galvanised and **powdercoated**

**FINISH OPTIONS**

- Penetrating oil / Graffiti guard / Clear sealant
- Custom paint options

**OPTIONS**

- Optional armrests
- **Skate deterrents**

**DIMENSIONS**

- 1800L x 345H x 450D

**WEIGHT**

- 40Kg

- Part of the 'Esplanade' furniture suite. Made to order and can be customised to suit clients requirements.
- Furniture is not supplied with installation instructions, install fastenings or footing details. These are to be specified and determined by the installing contractor for the specific requirements of each site.