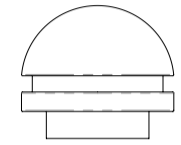
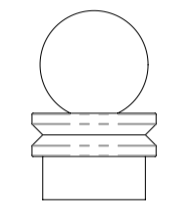


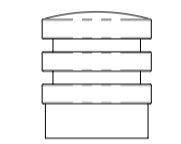
=- °) V



=- °) V



=- °) V



=- °) V



oMkuV



oMkuV

Ô [[~ ! • Áã á @ • Á @ , } Áæ^Á áãæã^Á } | Áæ áÁ æ Áã-!Á Áæã È

SPECIFICATIONS

Code	BOL0175 - S/S Body, Cast Head Only BOL0176 - S/S Body, Cast Head & Skirt BOL0178 - Mild Steel Body, Cast Head Only BOL0179 - Mild Steel Body, Cast Head & Skirt
Material	304 Stainless Steel or Mild Steel Galvanised
Height	900mm Above Ground 290 Below Ground (1190mm Overall)
Diameter	Ø101.6 x 1.5 Wall Pipe - Stainless Steel Ø101.6 x 2 Wall Pipe - Mild Steel
Weight	7 Kg
Mounting	Cast into Concrete 290mm Deep

FEATURES

- 304 grade stainless steel electropolished with powdercoated cast head (and skirt)
- Mild steel hot dip galv & powdercoated with powdercoated cast head (and skirt)
- Cast aluminium head in range of designs - powdercoated finish
- Optional cast aluminium skirt in range of designs - powdercoated finish
- Welded bar for fixing into concrete

• Bollards are not supplied with installation instructions, install fastenings or footing details. These are to be specified and determined by the installing contractor for the specific requirements of each site.