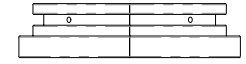


=-°) V °



oM&uV °

Ô[[~ | • Áá @ • Á @ , } Áæ^Á áææ^Á } | Áæ áÁ æ Áã-!Á Áææ È

SPECIFICATIONS

FEATURES

Code	BOL0207 - S/S Body, Cast Head Only BOL0208 - S/S Body, Cast Head & Skirt BOL0203 - Mild Steel Body, Cast Head Only BOL0204 - Mild Steel Body, Cast Head & Skirt
Material	304 Stainless Steel or Mild Steel Galvanised
Height	900mm Above Ground 290 Below Ground (1190mm Overall)
Diameter	Ø141.3 x 3.4 Wall Pipe - Stainless Steel Ø139.7 x 5 Wall Pipe - Mild Steel
Weight	20 Kg
Mounting	Cast into Concrete 290mm Deep

- 304 grade stainless steel electropolished with powdercoated cast head (and skirt)
- Mild steel hot dip galv & powdercoated with powdercoated cast head (and skirt)
- Cast aluminium head - powdercoated finish
- Optional cast aluminium skirt - powdercoated finish
- Welded bar for fixing into concrete

• Bollards are not supplied with installation instructions, install fastenings or footing details. These are to be specified and determined by the installing contractor for the specific requirements of each site.