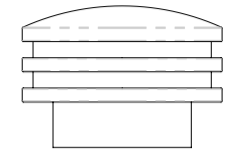
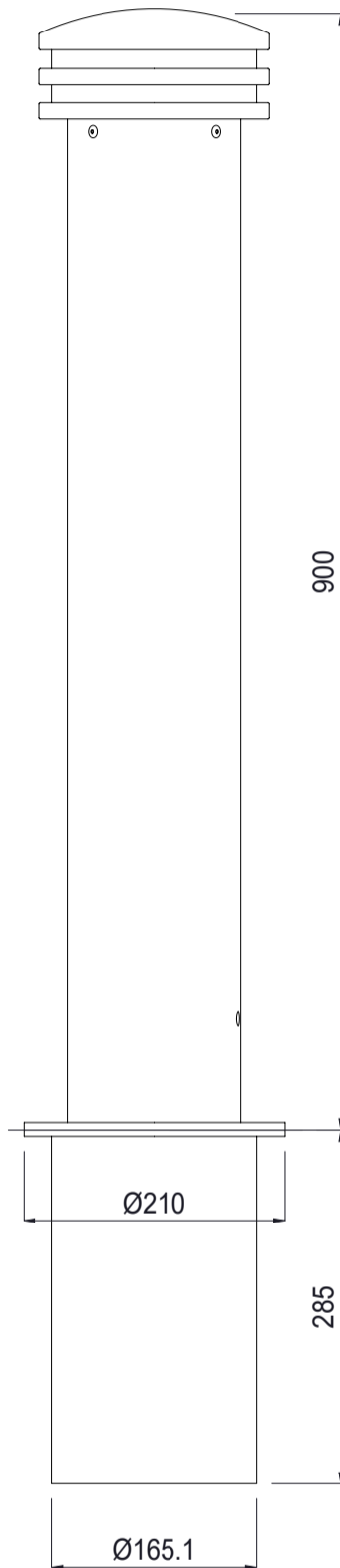
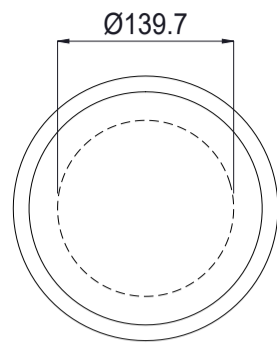


Ø140 Cast Head Bollard

London | Removable



HEAD No1A



SKIRT No1A

Colours / finishes shown are indicative only and may differ in reality.

SPECIFICATIONS

Code	BOL0209 - S/S Body, Cast Head & Skirt - Hot Dip Galvanised Socket BOL0205 - Mild Steel Body, Cast Head & Skirt - Hot Dip Galvanised Socket
Material	304 Stainless Steel or Mild Steel Galvanised
Height	900mm Above Ground 285 Below Ground (1185mm Overall)
Diameter	Ø141.3 x 3.4 Wall Pipe - Stainless Steel Ø139.7 x 5 Wall Pipe - Mild Steel
Weight	29 Kg (Removable Bollard)
Mounting	Socket Cast into Concrete 285mm Deep

FEATURES

- 304 grade stainless steel electropolished with powdercoated cast head (and skirt)
- Mild steel hot dip galv & powdercoated with powdercoated cast head (and skirt)
- Cast aluminium head - powdercoated finish
- Hot dip galvanised inground socket with optional lockable cover
- Removable and lockable bollard (hex key lock - key supplied)

• Bollards are not supplied with installation instructions, install fastenings or footing details. These are to be specified and determined by the installing contractor for the specific requirements of each site.