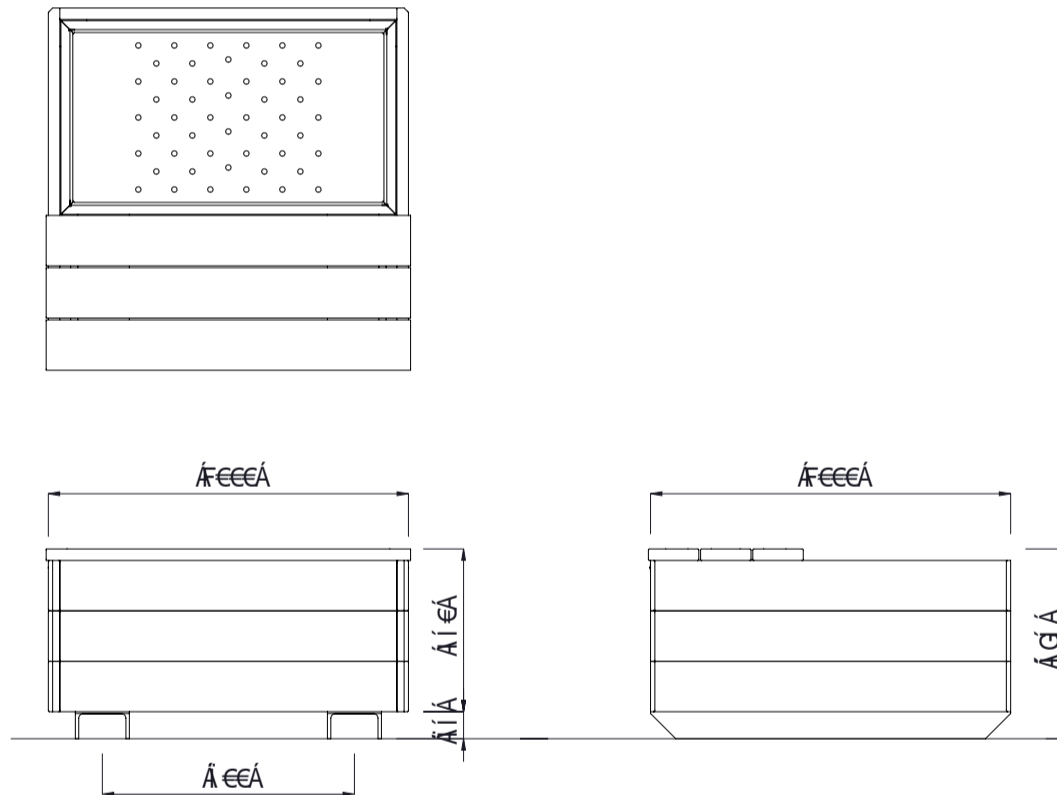


Ô[[|~!•ÁÁ ā @•Á @, } Áœ^Á áÁœœ^Á } | Áœ áÁ œ Áā-!Á Á^Áœ È



MATERIALS

- Timber (Hardwood)** • Vitex as standard
Other species available on request
- Timber (Softwood)** • Pine
- Steelwork** • Mild steel
- Hardware / Fasteners** • Stainless steel

FINISHES

- Un-sealed (Natural) as standard
- H3.2 tanned as standard
- Hot dip galvanised frame and galvanised liner for soil

FINISH OPTIONS

- Penetrating oil / Graffiti guard / Clear sealant
- Custom paint options

OPTIONS

- Steel corner protection angle - hot dip galvanised only or hot dip galvanised and powdercoated

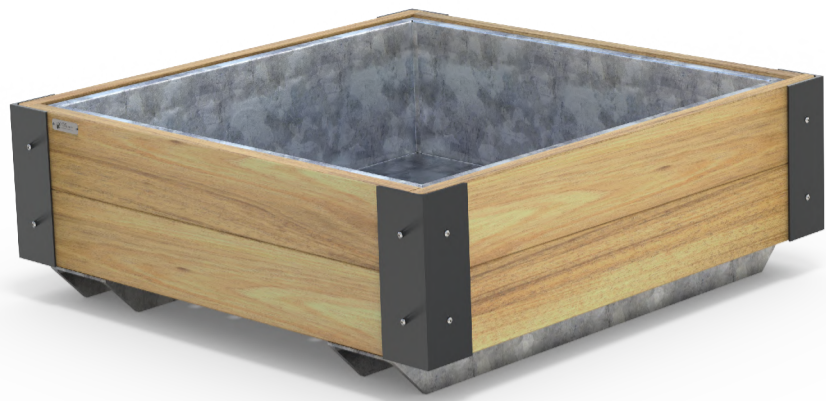
DIMENSIONS

- 1000W x 1000D x 525H
180 litre liner capacity

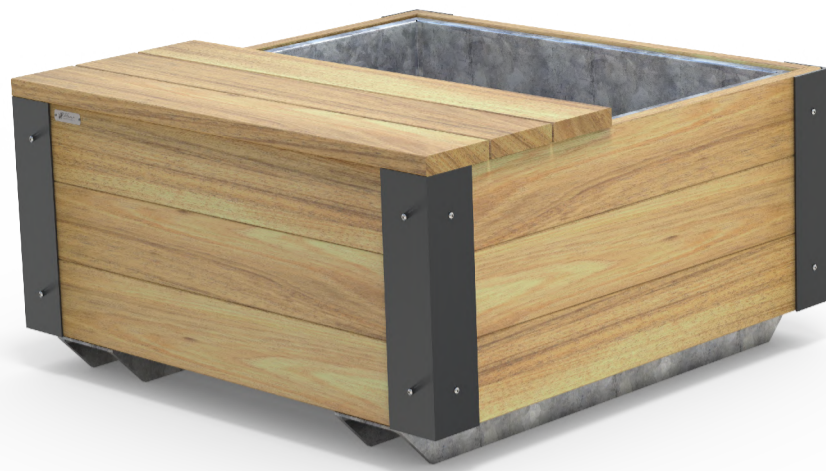
WEIGHT

- 140Kg (Empty)

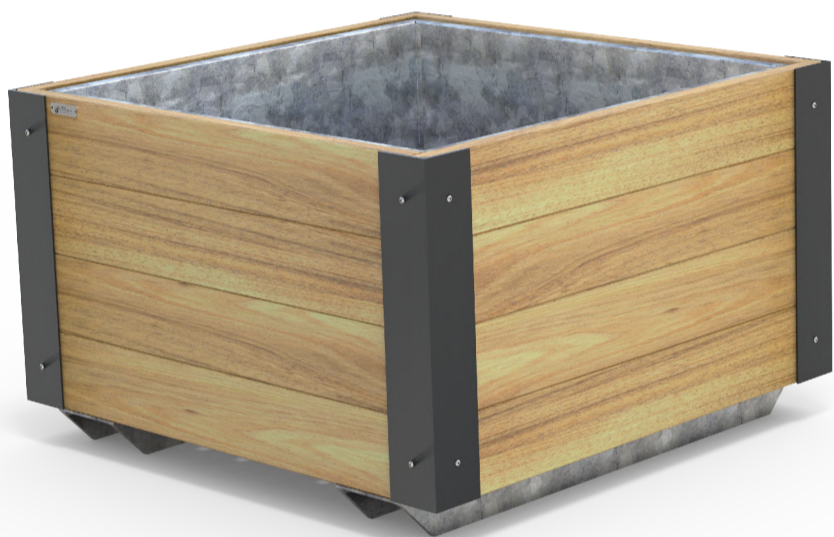
• Part of the 'Estate Planter' furniture suite. Made to order and can be customised to suit clients requirements.
 • Furniture is not supplied with installation instructions, install fastenings or footing details. These are to be specified and determined by the installing contractor for the specific requirements of each site.



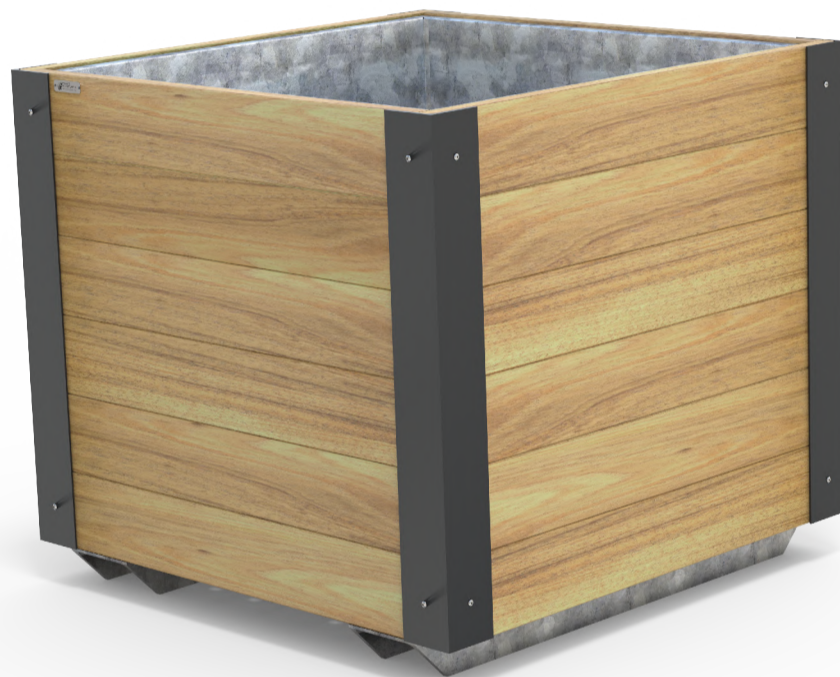
FEEÉÁ\FEEÉÁ\Á Í ÁÚ|æ ç' ÁÓ[ç



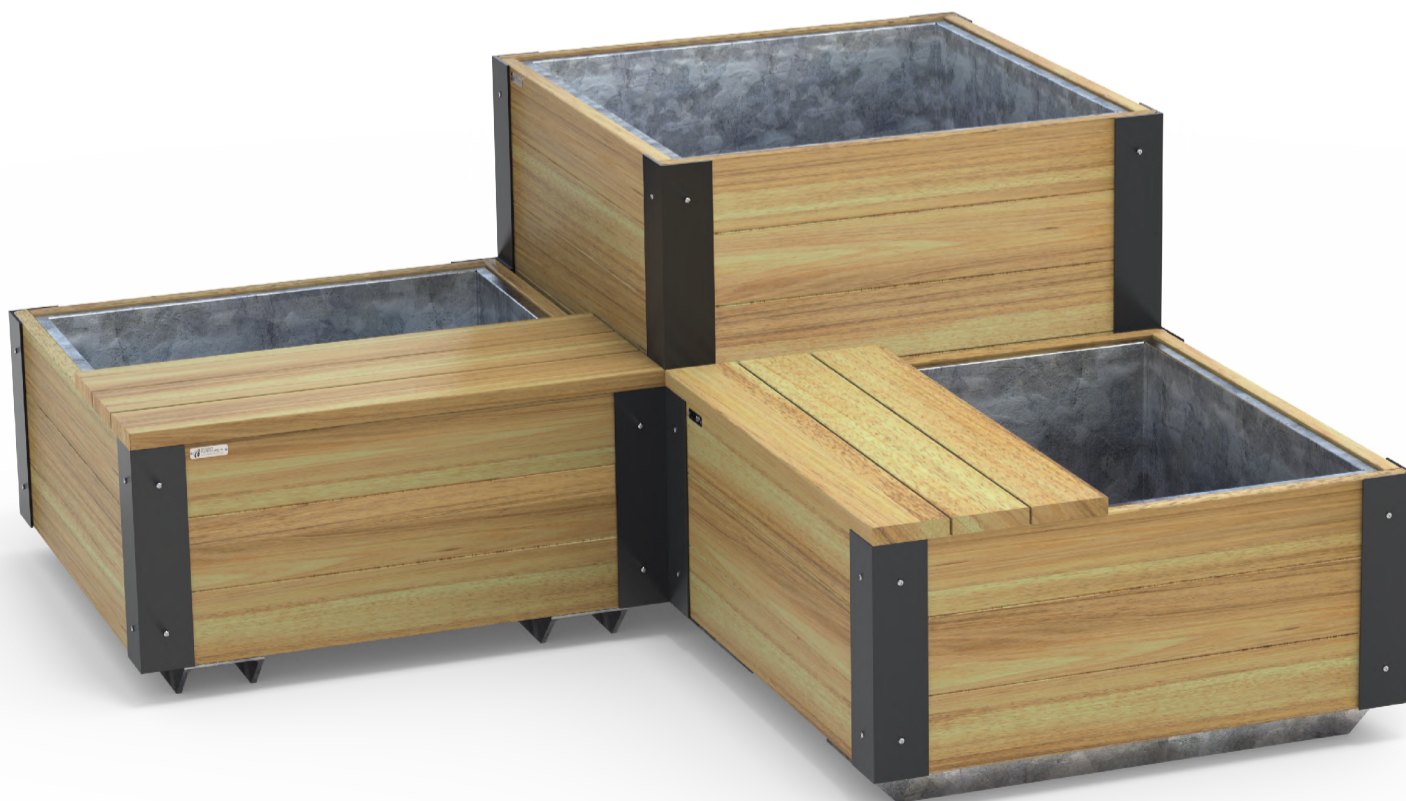
FEEÉÁ\FEEÉÁ\Á G' ÁÚ|æ ç' ÁÓ[] &@



FEEÉÁ\FEEÉÁ\Á H' ÁÚ|æ ç' ÁÓ[ç



FEEÉÁ\FEEÉÁ\Á F' ÁÚ|æ ç' ÁÓ[ç



T[á~|æ/Áæ[~ c