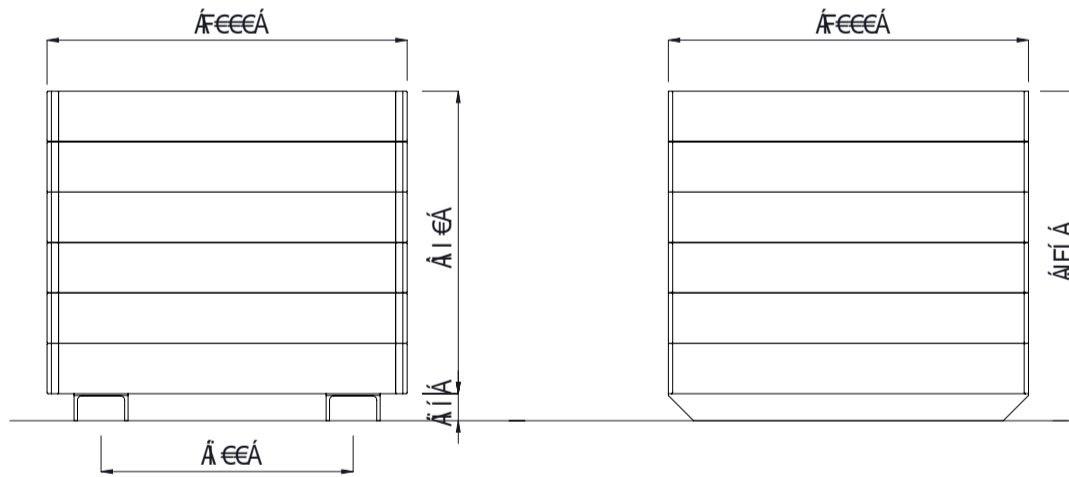
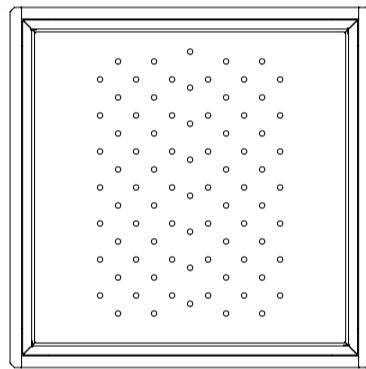


Technical drawing of the planter box showing its square shape and internal structure.



**MATERIALS**

- Timber (Hardwood)** • Vitex as standard  
 Other species available on request
- Timber (Softwood)** • Pine
- Steelwork** • Mild steel
- Hardware / Fasteners** • Stainless steel

**FINISHES**

- Un-sealed (Natural) as standard
- H3.2 tanalised as standard
- Hot dip galvanised frame and galvanised liner for soil

**FINISH OPTIONS**

- Penetrating oil / Graffiti guard / Clear sealant
- Custom paint options

**OPTIONS**

- Steel corner protection angle - hot dip galvanised only or hot dip galvanised and powdercoated

**DIMENSIONS**

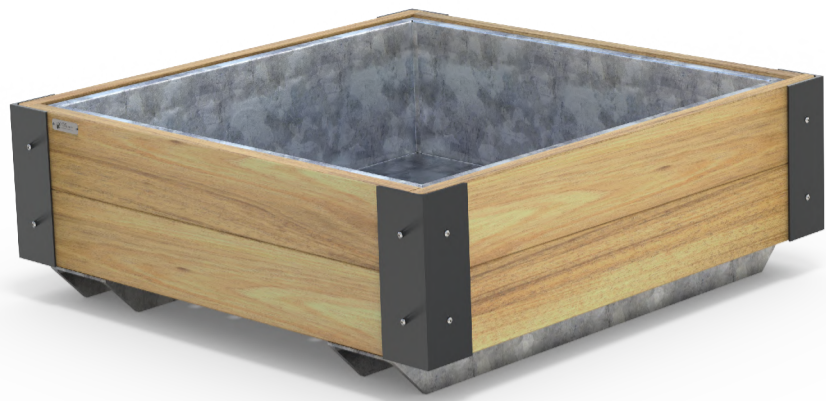
- 1000W x 1000D x 915H  
 650 litre liner capacity

**WEIGHT**

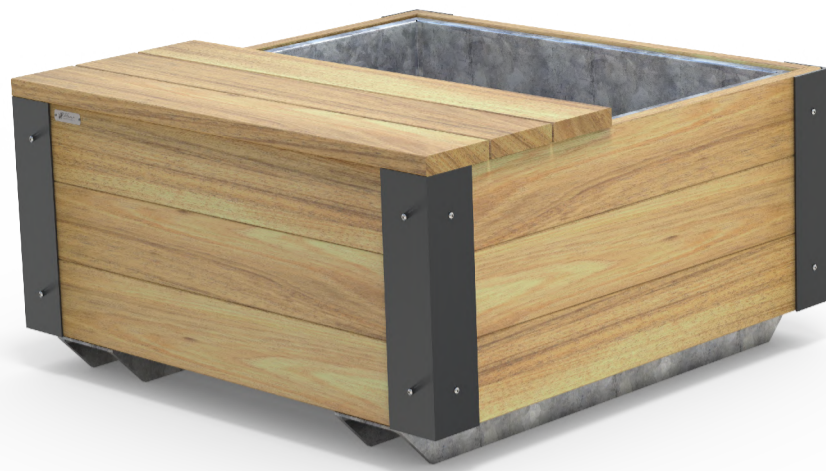
- 215Kg (Empty)

- Part of the 'Estate Planter' furniture suite. Made to order and can be customised to suit clients requirements.
- Furniture is not supplied with installation instructions, install fastenings or footing details. These are to be specified and determined by the installing contractor for the specific requirements of each site.

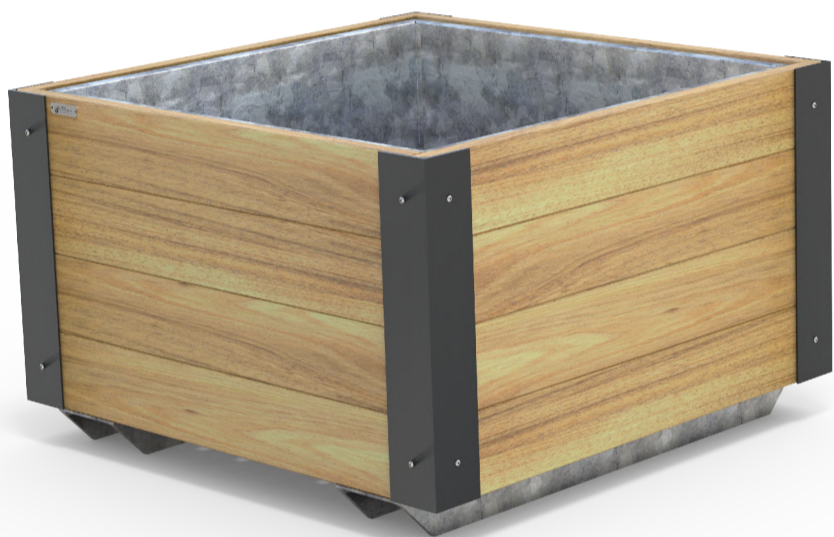




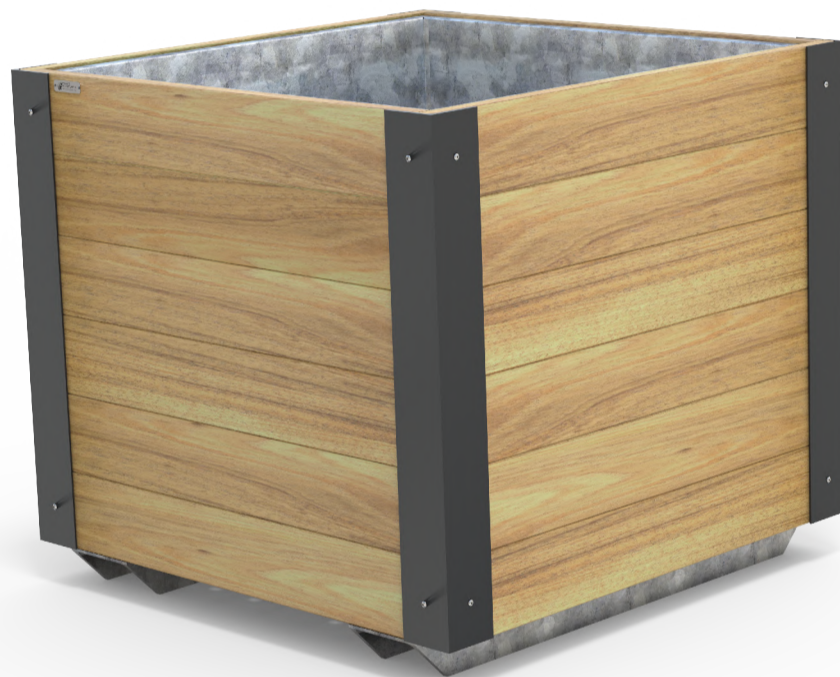
FEEÉÁ\FEEÉÁ\Á Í ÁÚ|æ ç' ÁÓ[ ç



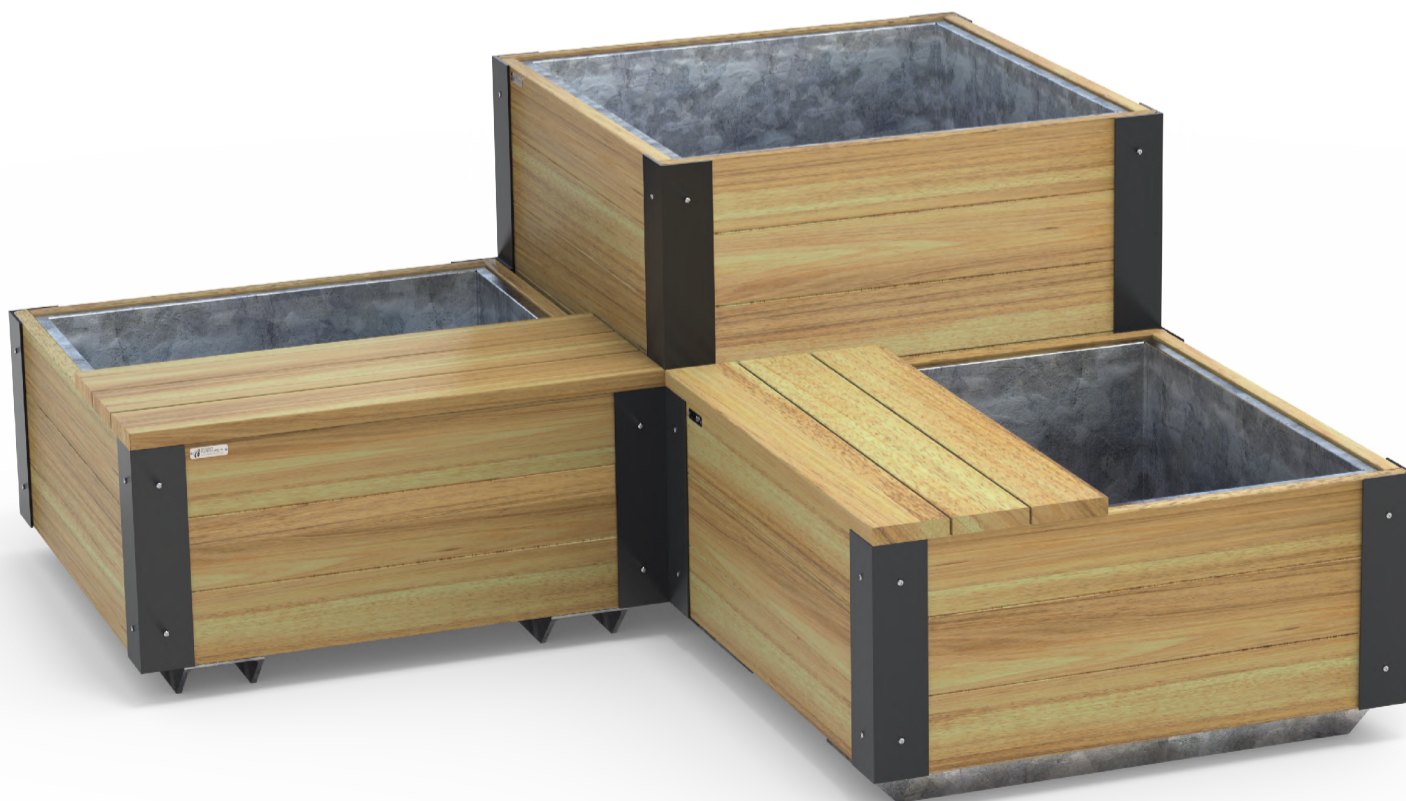
FEEÉÁ\FEEÉÁ\Á G ÁÚ|æ ç' ÁÓ[ ] &@



FEEÉÁ\FEEÉÁ\Á H ÁÚ|æ ç' ÁÓ[ ç



FEEÉÁ\FEEÉÁ\Á FÍ ÁÚ|æ ç' ÁÓ[ ç



T[ á~ |æ/Áæ[~ c