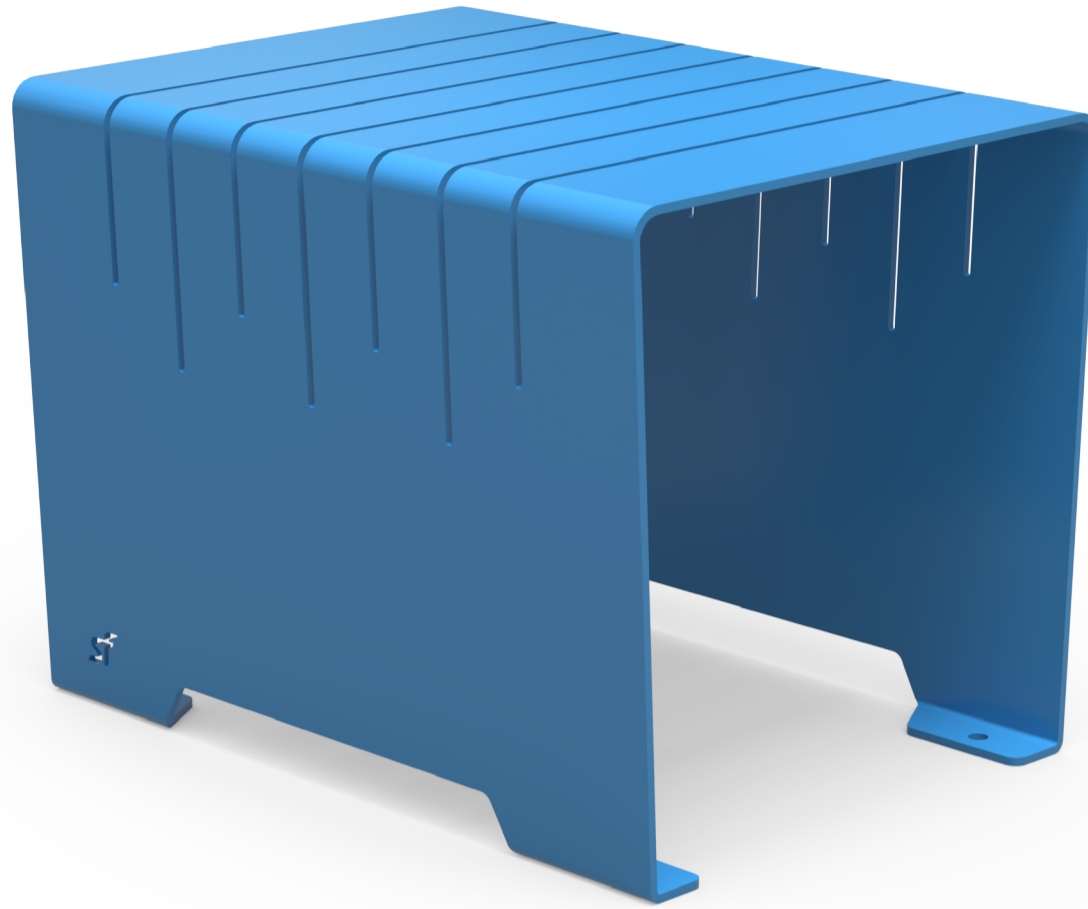
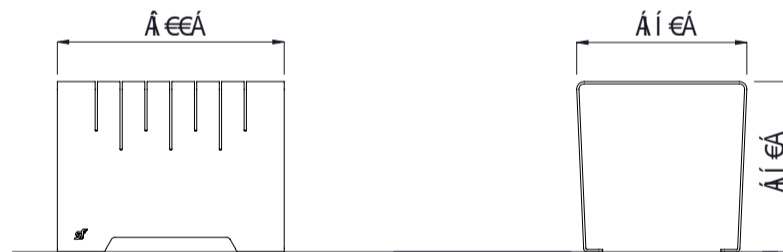
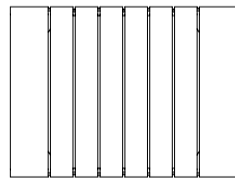


U}^@}*æUq[|
 Î€€{ { Å[}*



Ô[|~|•Áã@•Á@, } Å^Á åææ^Á } Å åÁ æ Åã! Å Áæ Å



	MATERIALS	FINISHES	FINISH OPTIONS
Metalwork	• Aluminium as standard	• Powdercoated	• Custom Paint options
Hardware / Fasteners	• Stainless steel		
	OPTIONS	DIMENSIONS	WEIGHT
• Custom laser design • End panels		• 600L x 450H x 450D • 1800L x 450H x 450D • 2400L x 450H x 450D	• 12KG • 35KG • 46KG

- Part of the 'Onehunga' furniture suite. Made to order and can be customised to suit clients requirements.
- Furniture is not supplied with installation instructions, install fastenings or footing details. These are to be specified and determined by the installing contractor for the specific requirements of each site.